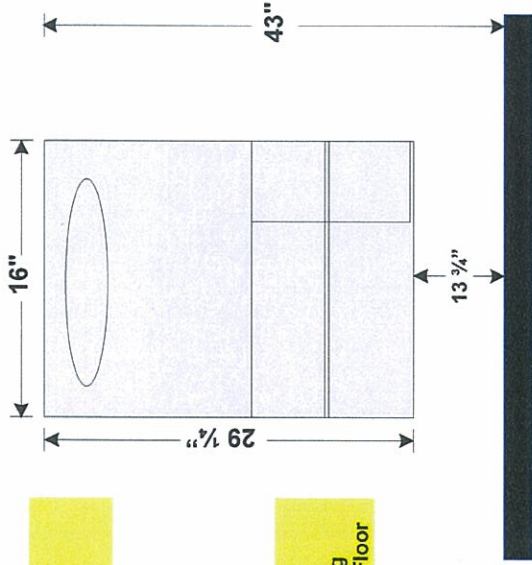


**ROUGH WALL OPENINGS AND PLACEMENT FOR B3474 AND B3574**



**ROUGH OPENING**  
16" W x 29 1/4" H

**ELEVATION**  
Start Rough Opening  
13 3/4" Off the Finished Floor

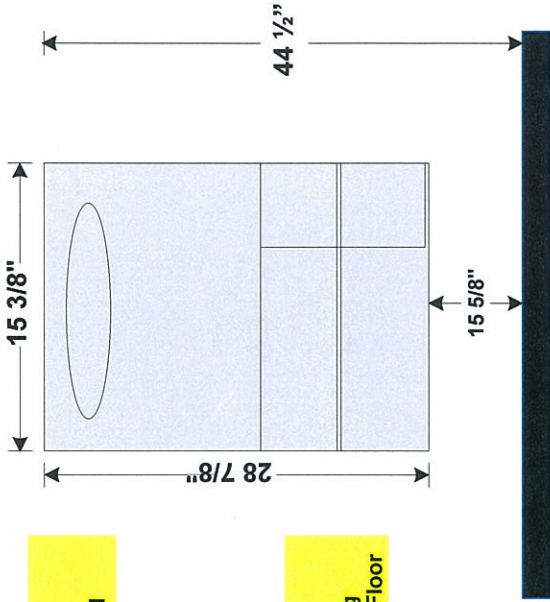


**LEFT SIDE UNIT**  
B3574 OR B3474

**RIGHT SIDE UNIT**  
B3574 OR B3474

**ROUGH WALL OPENINGS AND PLACEMENT FOR BRADLEY 5912 AND 5922**

**ROUGH OPENING**  
15 3/8" W x 28 7/8" H



**ELEVATION**  
Start Rough Opening  
15 5/8" Off the Finished Floor



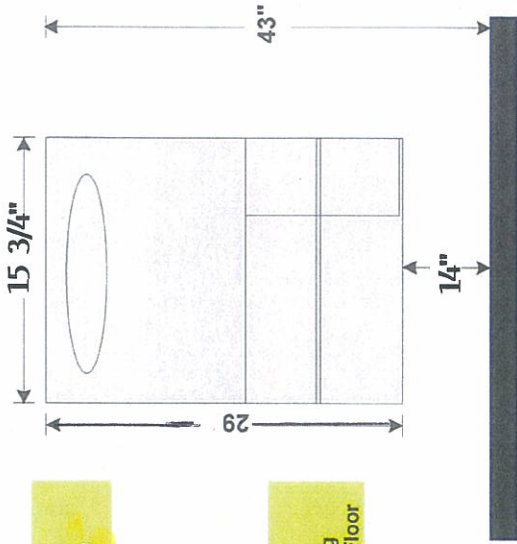
**LEFT SIDE UNIT**  
BRADLEY 5912 OR 5922

**RIGHT SIDE UNIT**  
BRADLEY 5912 OR 5922

**ROUGH WALL OPENINGS AND PLACEMENT FOR ASI 0482 AND 0485**

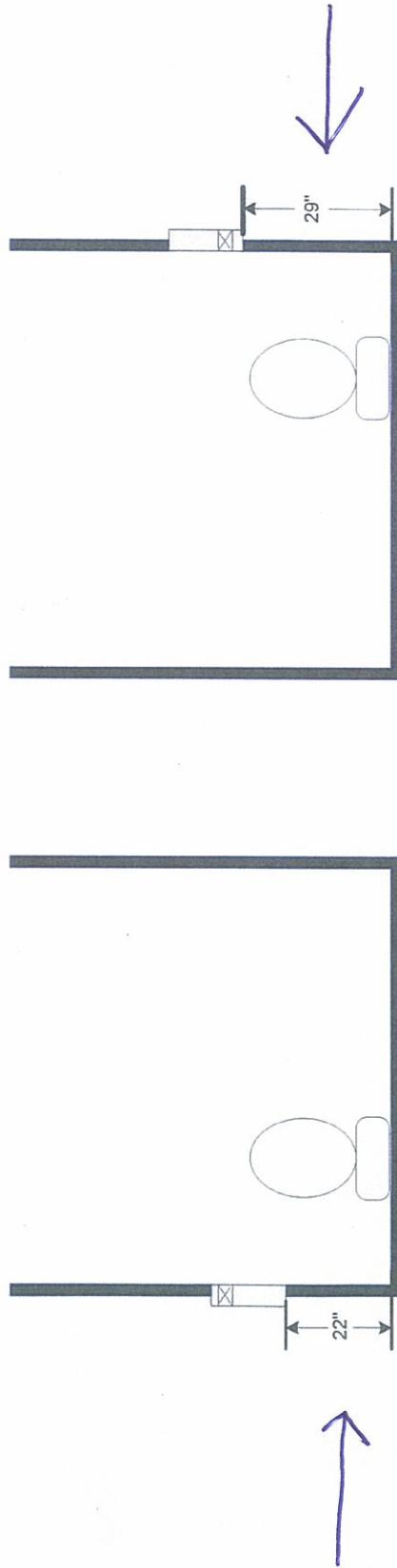
ROUGH OPENING

**15 3/4 x 29**



ELEVATION

Start Rough Opening  
**14"** Off the Finished Floor



**LEFT SIDE UNIT**

**ASI 0482 OR 0485**

**RIGHT SIDE UNIT**

**ASI 0482 OR 0485**